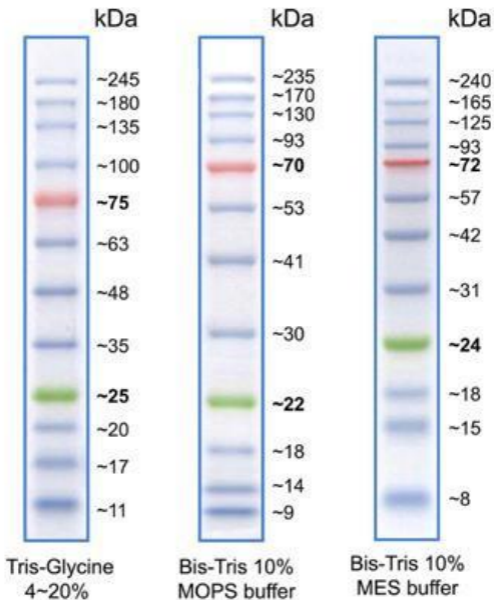


ARROW wide-range Prestained Protein Ladder



Content and Storage

Content	Cat	Product	Qty
	APM0672.500	wide-range Prestained Protein Ladder	500 µl / vial
Storage	Stable for up to 2 weeks at 25°C Stable for up to 3 months at 4°C For long term storage, store at -20°C		

Description

The **ARROW wide-range Prestained ProteinMarker** is a three-color protein standard with 12 pre-stained proteins covering a wide range molecular weights from 10 to 245 kDa. Proteins are covalently coupled with a blue chromophore except for two reference bands (one green and one red band at 25 kDa and 75 kDa respectively) when separated on SDS-PAGE (Tris-glycine buffer).

The **ARROW wide-range Prestained Protein Marker** is designed for monitoring protein separation during SDS-polyacrylamide gel electrophoresis, verification of Western transfer efficiency on membranes (PVDF, nylon, or nitrocellulose) and for approximating the size of proteins. The Marker is supplied in gel loading buffer and is ready to use.

Quality Control

5 µl of ARROW wide-range Prestained Protein Ladder resolves 10 bands in 4-20% SDS-PAGE (Tris-glycine buffer) and after Western blotting to PVDF membrane.